

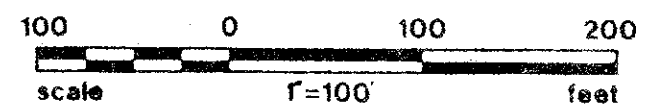
PLAT NO. 5

(A PLANNED UNIT DEVELOPMENT)

EASTPOINTE COUNTRY CLUB

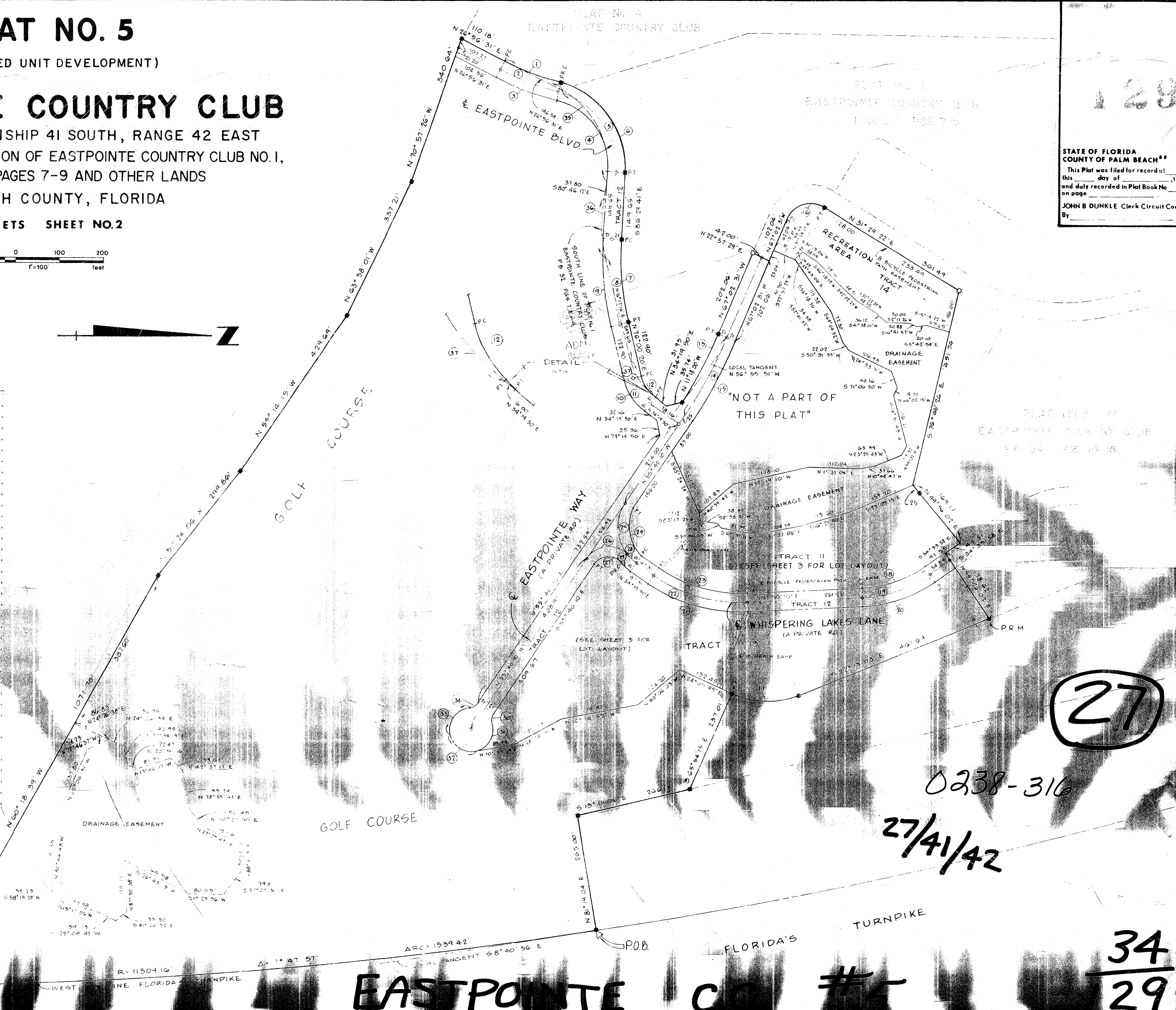
IN SECTION 27, TOWNSHIP 41 SOUTH, RANGE 42 EAST
BEING A REPLAT OF A PORTION OF EASTPOINTE COUNTRY CLUB NO. 1,
PLAT BOOK 32, PAGES 7-9 AND OTHER LANDS
PALM BEACH COUNTY, FLORIDA

IN 3 SHEETS SHEET NO. 2



CURVE DATA TABLE

RADIUS	Δ	ARC	TANGENT
1. 629.00'	12°-44'-54"	145.47'	70.73'
2. 650.00'	12°-49'-14"	145.57'	71.09'
3. 671.00'	12°-53'-54"	145.67'	71.45'
4. 154.00'	79°-23'-42"	21.440'	127.84'
5. 175.00'	70°-23'-42"	24.146'	145.27'
6. 196.00'	71°-23'-32"	27.140'	162.71'
7. 629.00'	17°-31'-09"	192.12'	96.31'
8. 650.00'	17°-36'-09"	198.53'	100.04'
9. 671.00'	17°-41'-09"	204.94'	103.78'
10. 121.00'	41°-41'-33"	39.61'	45.95'
11. 100.00'	41°-41'-33"	72.14'	35.06'
12. 79.00'	41°-41'-33"	57.44'	30.07'
13. 979.00'	10°-00'-49"	172.77'	35.61'
14. 1000.00'	11°-21'-11"	198.49'	49.57'
15. 1021.00'	11°-21'-21"	202.66'	101.66'
16. 58.00'	98°-31'-53"	99.74'	67.35'
17. 200.00'	46°-18'-48"	161.66'	85.54'
18. 279.00'	31°-43'-43"	154.50'	79.29'
19. 300.00'	31°-43'-43"	166.13'	85.26'
20. 321.00'	31°-43'-43"	177.76'	91.22'
21. 371.00'	37°-10'-05"	240.67'	124.74'
22. 350.00'	37°-10'-05"	227.05'	117.68'
23. 329.00'	37°-10'-05"	213.42'	110.62'
24. 249.00'	90°-00'-00"	124.09'	79.00'
25. 100.00'	75°-31'-21"	131.81'	77.46'
26. 60.00'	104°-28'-39"	109.41'	77.46'
27. 39.00'	104°-28'-39"	71.12'	50.45'
28. 100.00'	14°-28'-39"	25.27'	12.73'
29. 121.00'	14°-28'-39"	30.37'	15.37'
30. 27.00'	52°-10'-09"	22.76'	12.24'
31. 59.00'	96°-51'-25"	84.60'	56.44'
32. 79.00'	90°-00'-00"	78.71'	50.09'
33. 59.00'	97°-23'-33"	63.00'	56.91'
34. 25.00'	52°-10'-09"	22.76'	12.24'
35. 196.00'	72°-10'-17"	247.29'	131.16'
36. 329.00'	23°-51'-32"	131.74'	66.76'
37. 129.00'	41°-57'-26"	94.47'	49.46'



STATE OF FLORIDA
COUNTY OF PALM BEACH
This Plat was filed for record at
this day of _____, 1978,
and duly recorded in Plat Book No.
on page
JOHN B. DUNKLE, Clerk Circuit Court
By _____ D.C.

27

0238-316

27/41/42

EASTPOINTE COUNTRY CLUB # 34/29